

4-channel hand-held radio transmitter, type TDRCT-04



Overview of functions 2
 Technical data and scope of delivery 2
 Operation 3 – 5
 Contact information 6

The signatory declares that the hand-held radio transmitter conforms with the Guidelines and Directives according to R&TTE 1999/5/EC.

Model: TDRCT - 04

DIN EN 301489-3:2013-12, DIN EN 300220-3

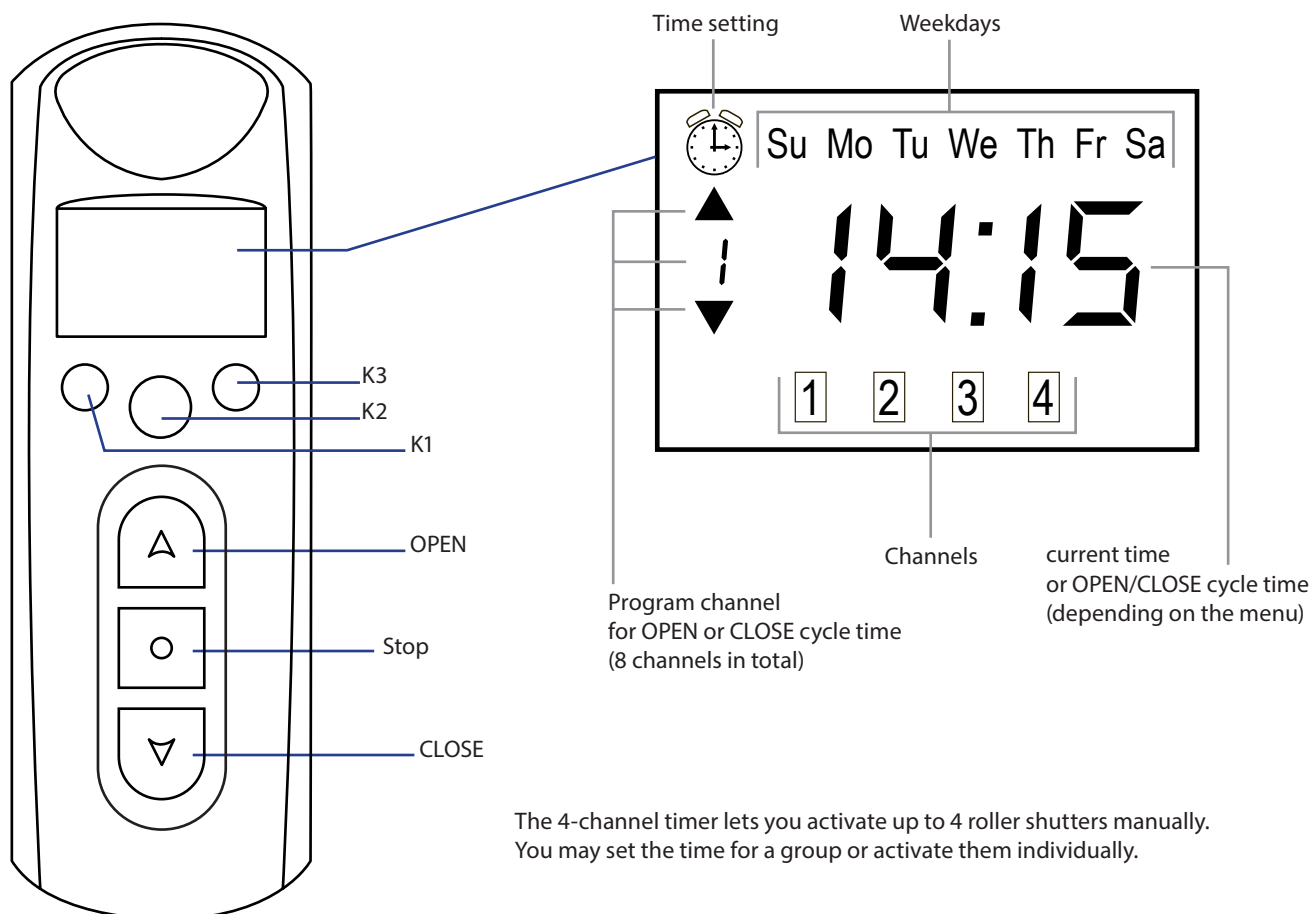
Schoenberger Germany Enterprises GmbH & Co. KG
 Zechstraße 1-7
 82069 Hohenschäftlarn



Michael Mayer
 Managing Director

WEEE Reg. No. DE 41060608 for: JAROLIFT®™

Overview of functions/technical data & scope of delivery



Technical data and scope of delivery

Technical Data	
Power supply:	3 Volt
Battery model:	CR2430
Operating current:	≤12 mA
Protection:	IP 30
permissible ambient temperature:	-10°C to +60°C
Encoding the radio:	Rolling code
Radio frequency:	433.92 MHz
Channels:	4-channel
Compatibility:	Compatible with all TDR wireless motors and receivers, as of production date 03/2010

Once you have unpacked the unit, compare the content of the package with the information provided in these instructions about the scope of delivery:

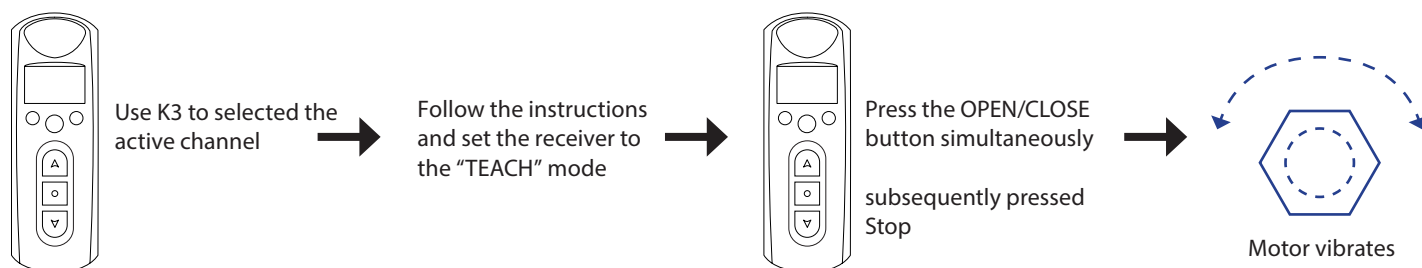
1. Hand-held transmitter TDRCT-04
2. Wall bracket
Operating Instructions



Adaptation of the hand-held transmitter

- 1 Use the K3 button (description see Page 2) on the hand-held transmitter and select the channel on which you would like to program the transmitter (the active channel is highlighted and framed in the channel bar at the bottom of the display).
- 2 Now, set the respective radio receiver or wireless motor to the "TEACH" mode and follow the applicable instructions.
- 3 Within 10 seconds, press the OPEN and CLOSE button on your hand-held transmitter simultaneously and then press the STOP button briefly. If the "TEACH" process was successful, it is acknowledged by the brief vibration of the tubular motor that is attached to the radio receiver, or the vibration of the wireless motor. Now you can use the OPEN/STOP/CLOSE button to activate the motor on your transmitter.

Each button must be depressed for approx. 1 second!



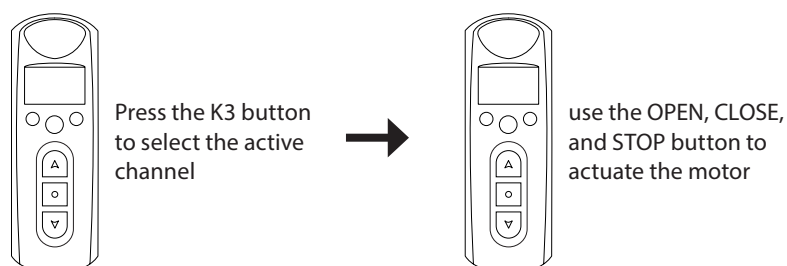
Individual operation or group activation

The hand-held transmitter TDRCT-04 provides you with the option to operate 4 units individually or as a group via remote control. To do this, use the K3 button (description see Page 2) to select the desired channel. Subsequently, you can use in the operating keys OPEN/STOP/CLOSE to control the active channel.

In order to selected the group operating mode, press the K3 button several times.

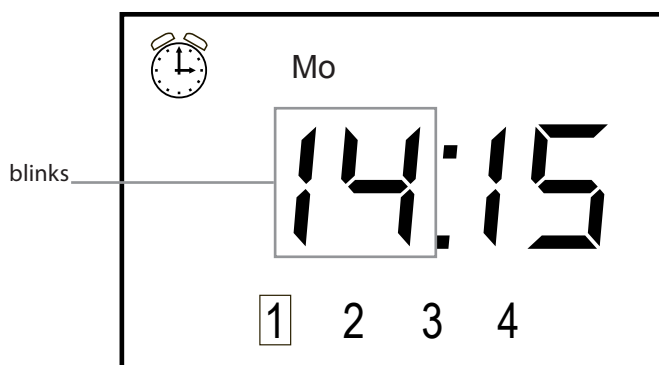
As soon as the hand-held transmitter passes the fourth channel, all 4 channels are highlighted in the display. This indicates that all 4 channels are selected and can be operated simultaneous via the OPEN/STOP/CLOSE function.

In order to switch back to the individual operating mode, press the K3 button again and the frame in the display changes back to the first channel automatically.



Setting the current time and the day of the week

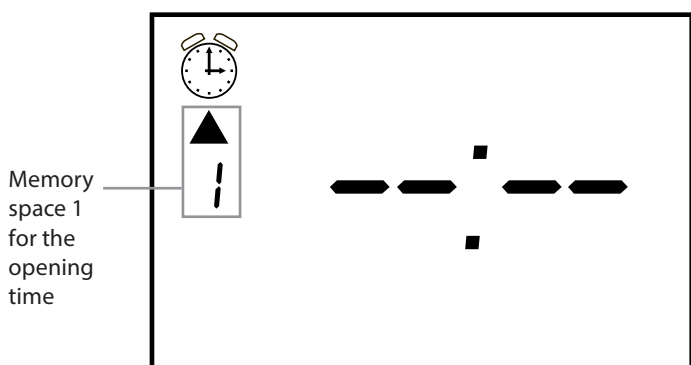
1. First, go to the main menu and click the K1 button (for description see Page 2).
In the upper left-hand corner, the symbol of an alarm clock is shown and the hour display blinks.



2. Use the Up/Down arrow key to set the time; press the K1 button to confirm the input.
3. Now, the minute display blinks. Proceed the same way as you did under step 2. Follow the same steps when selecting the weekdays.
Please take into consideration that the abbreviations reflect the English names for the days of the week
(Su=Sunday, Mo=Monday, Tu=Tuesday, We=Wednesday, Th=Thursday, Fr=Friday, Sa=Saturday)
4. Once you have completed the settings, press the STOP button. This completes the programming mode and the transmitter changes back to the main menu.

Setting the OPEN and CLOSE cycle times for the roller shutter

1. Go to the main menu and press the K2 button in order to access the operating schedule menu. Now, an alarm clock is indicated in the upper left-hand corner of the display. You can program up to 8 OPEN and 8 CLOSE cycle times. You may allocate one specific channel or all 4 channels to the OPEN and CLOSE cycle time times



2. When activating the K2 button, you connect to the individual memory spaces. (The arrows on the left-hand side of the display indicate whether the cycle time refers to the OPEN or CLOSE movement)
This display (---) indicates that the memory space is inactive and the activation time of the roller shutter on this channel will not be carried out.
If a time is displayed already, continue with Step 4; otherwise continue with Step 3. In order to re-activate the deactivated memory space, press the K3 button.
3. In order to re-activate the deactivated memory space, press the K3 button. In order to deactivate the memory space again, press the K3 button until the time is displayed (---) again.

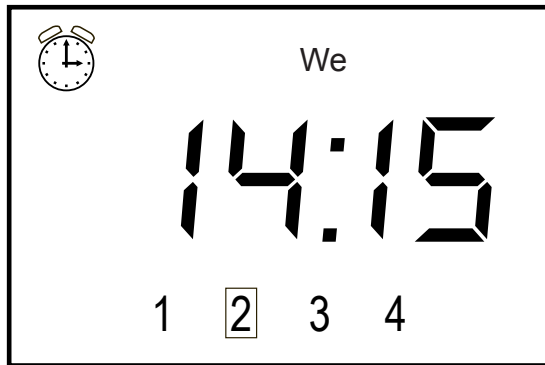
4. Now, press the K1 button to set the time. The "Hour" display is now blinking and can be adjusted with the Up/Down arrow key. Press the K1 button again to switch to the "Minute" setting mode. Here, you can use also the Up/Down arrow key to adjust the minutes.
5. After pressing the K1 button again, you access the "Weekday" setting mode. Here, you can define to which weekday(s) the previously adjusted time applies. Use the Up/Down arrow key to select the desired setting.
 - You may select between:
 - individual work days = e.g., "Tu" for Tuesday
 - shortened work week = Mo Tu We Th Fr (Monday to Friday)
 - entire work week = Mo Tu We Th Fr Sa (Monday to Saturday)
 - entire week = Su Mo Tu We Th Fr Sa (Monday to Sunday)
6. If all settings are correct, confirm your input by pressing the K2 button. If you wish to continue with additional changes, press K1 button again – the display skips back to the blinking "Hour" display and you continue with step 4 in this section.
7. In order to allocate the timetable to a particular channel or to all channels, press the K3 button on your hand-held transmitter. Now, the channel for which this timetable is allocated is highlighted and framed in the channel bar at the bottom of the display. If you would like to allocate all channels to this schedule, press the K3 button until all 4 channels are highlighted.

Caution!
If pressing the K3 button continuously, and the number of the 4 highlighted channels is exceeded, the memory space switches back to "inactive" mode.
Simply press the K3 button again. The display is activated again and the first channel in the channel display is highlighted.
8. If you are satisfied with your selections, press the K2 button again in order to move to the next memory space and start from the beginning all press the STOP button to leave the programming process.

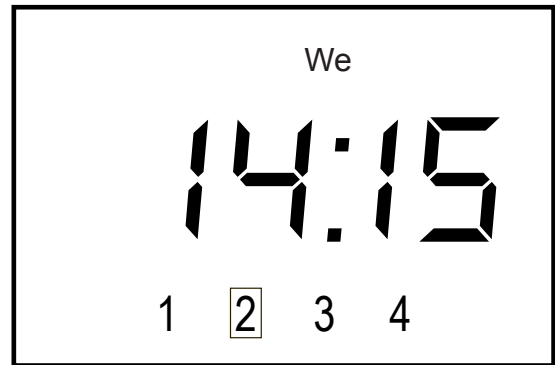
Activating and deactivating the time function

Ensure you are in the main view. Moving from any menu to the main menu is as simple as clicking the STOP button briefly.

While in the main menu, keep the STOP button depressed and briefly press the K2 button in order to activate or deactivate the cycle time function. If the clock is active, an alarm clock is shown in the main view.



Timer active



Timer inactive

If you have any concerns about our product or your unit is faulty, please contact us in writing or send an email to the following address:

JAROLIFT®™

is a registered trademark of the
Schoenberger Germany Enterprises GmbH & Co. KG
Zechstraße 1 – 7
82069 Hohenschäftlarn

Tel.: 08178 / 932 932 / 3,425

Fax: 08178 / 932 939 / 425

info@jarolift.de

www.jarolift.de

Subject to technical changes, misprints and errors.