

1-channel wireless receiver for awning motors, flush-mounted

Type TDRRUP-M



General safety instructions	1
Technical data & included with delivery	2
Electrical connection.....	2
Programming the radio transmitter	3
Setting inching mode.....	5
Contact information	6

- (GB) An English manual can be downloaded at <http://www.jarolift.de/en/manuals>
- (F) Vous trouverez des instructions en français sur <http://www.jarolift.de/fr/instructions>
- (I) Una guida in italiano è disponibile alla pagina <http://www.jarolift.de/it/guida>
- (E) Encontrará un manual en idioma español en <http://www.jarolift.de/es/manual>
- (NL) Een handleiding in Nederlands kan u vinden op <http://www.jarolift.de/ne/handleiding>
- (PL) Instrukcja w języku polskim znajduje się na stronie <http://www.jarolift.de/pl/instrukcje>
- (TR) Türkçe kılavuzu <http://www.jarolift.de/tr/kilavuzu> adresinde bulabilirsiniz

The radio receiver TDRRUP-M meets the requirements of the relevant European and national regulations.

2014/53/EU - Radio Equipment regulations
2014/30/EU - EMC regulations
2014/35/EU - Low voltage regulations

EN 301 489-1 V1.9.2:2011; EN 301 489-3 V1.6.1:2013;
EN 300 220-2 V2.4.1:2012; EN 61058-1:2002/A2:2008;
EN 61058-1/A2:2008;

Schoenberger Germany Enterprises GmbH & Co. KG
Zechstraße 1-7
82069 Hohenschäftlarn- Germany




Michael Mayer
Managing Director

WEEE-Reg.-Nr. DE 41060608 for: JAROLIFT®™

Rev.: 05/2015_Jarolift TDRRUP-M_ST



Any work on electrical equipment carries the risk of fatal injury from electric shock.

- Connecting the tubular motor to the mains, and any work on electrical equipment, must only be carried out by an approved electrical specialist in accordance with the connection plans included in these instructions (see Page 2).
- Always disconnect the power prior to installing or connecting any electrical equipment.



Failure to follow these instructions can endanger life!

Observe the regulations regarding installation in damp areas. In particular, observe DIN VDE 0100, section 701 and 702 when using in damp areas. These regulations contain compulsory protective measures.



Use of defective equipment can cause a hazard for persons and material damage (electric shock, short circuit)

- Never use defective or damaged units.
- Check the motor and mains cable for any damage.
- Please refer to our Service Team (see last page), if you find any damage to the equipment.



Improper use may lead to an increased risk of injury.

- Please instruct all personnel on how to use the tubular motor and the radio receiver safely.
- Watch the moving awning carefully and keep people away until it has stopped moving.
- Do not allow children to play with fixed controls or the remote control.
- Keep the hand transmitter in such a way to prevent any accidental operation, e.g. by children playing.
- Disconnect the equipment from the electricity supply before cleaning the awning.

IMPORTANT

In accordance with DIN EN 13695, care must be taken to ensure that the movement conditions established for roller shutters as per EN12045 are observed, therefore with side locking.

The radio receiver TDRRUP-M is only for use with the motion sensor. Please do not use it with other motors. If the motion sensor is activated by remote control and the radio receiver TDRRUP-M does not receive a radio signal for more than 30 minutes, the awning will be retracted automatically.



Correct use / operating conditions

Use the tubular motors only to open and close roller shutters and awnings.

IMPORTANT

- The motor cable must be laid in an empty conduit as far as the junction box, in accordance with local electrical regulations.
- Only use the manufacturer's original components and accessories.

Conditions for use

- For electrical connection, the installation site must have a constant 230 V / 50 Hz electricity supply, with a main circuit disconnect device (fuse) on site.
- Constant radio connection between motion sensor and receiver



Important installation instructions



IMPORTANT

Before assembly, compare the voltage / frequency information on the type label with that of the local electricity network. Before installing the radio receiver, remove or decommission any cables or units not needed for operation.

After unpacking, compare the following:

- contents of package and the delivery information in these instructions.
- Ensure the type of receiver complies with the information provided on the nameplate



Using the radio receiver TDRRUP-M, you can convert a simple tubular motor into a convenient wireless motor in no time. The motor can then be controlled remotely using any of the Jarolift TDR radio transmitters available.



CAUTION! The radio receiver is not intended for use outdoors and may only be used in closed, dry rooms. If you do, nonetheless, use the receiver outdoors, we recommend installation into a water-protected surface cap.



Please note that the radio receiver TDRRUP-M can only be used with awning motors.
The radio receiver TDRRUP-M features a special protection function in conjunction with the motion sensor TDMS.
If the motion sensor is activated by remote control and the radio receiver TDRRUP-M does not receive a radio signal for more than 30 minutes, the awning will be retracted automatically.

i Technical data & included with delivery

Technical data	
Power supply:	230 V, 50 Hz
System load:	≤ 400W
Standby consumption:	1 Watt
Protection:	IP 20
max. authorised ambient temperature:	-20°C to + 50°C
Radio coding:	Rolling code
Radio frequency:	433.92 MHz
Channels:	The receiver can store a maximum of 15 transmitting channels
Compatibility:	Compatible with all TDR radio transmitters, as of production date 03/2010

Once you have unpacked the unit, compare the content of the package with the information provided in these instructions about the scope of delivery:

- Radio receiver TDRRUP-M
+ original instructions

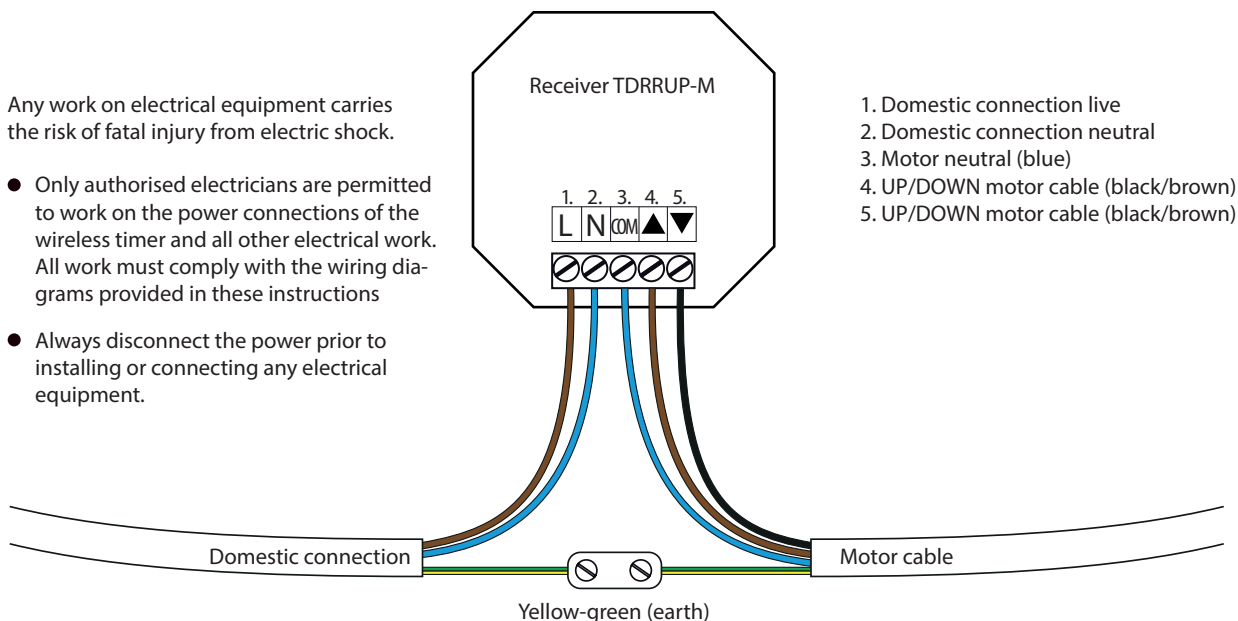


Electrical connection



Any work on electrical equipment carries the risk of fatal injury from electric shock.

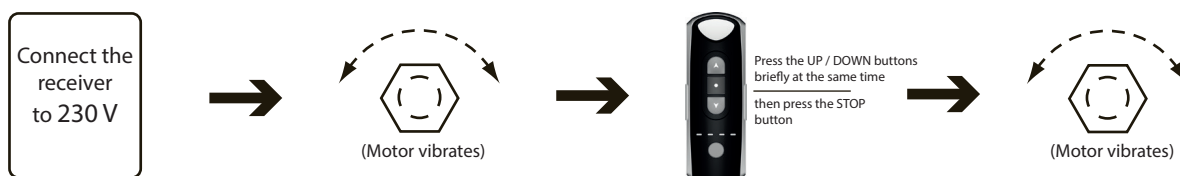
- Only authorised electricians are permitted to work on the power connections of the wireless timer and all other electrical work. All work must comply with the wiring diagrams provided in these instructions
- Always disconnect the power prior to installing or connecting any electrical equipment.





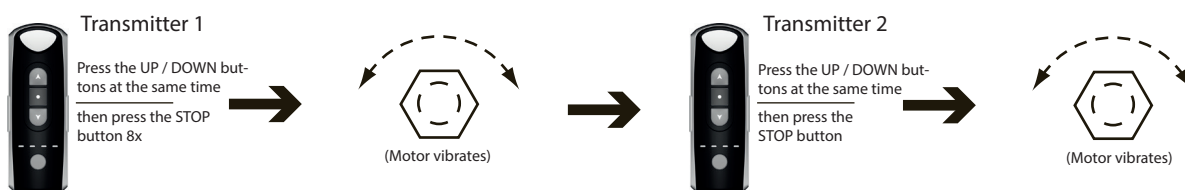
Programming the radio code

1. Connect the radio receiver in accordance with the assembly instructions (see Page 2). The motor will vibrate briefly to indicate that the receiver is now in programming mode for 10 seconds. After every new connection, the radio receiver will be in programming mode automatically for 5 seconds.
2. Within 5 seconds, press the UP and DOWN button on your transmitter at the same time, release them, and then press the STOP button briefly. If the code has been programmed successfully, the motor vibrates once more. Now you can control the motor using the UP/STOP/DOWN buttons on your transmitter.



Copying an existing radio code (only when a transmitter has already been programmed)

1. Press the UP and DOWN buttons at the same time on the transmitter already programmed, and then release them. Then press the STOP button on this transmitter eight times. The motor will vibrate briefly as confirmation.
2. Within 10 seconds, simultaneously press the UP and DOWN button on the transmitter onto which the code should be copied and then release them. Then press the STOP button six times. The motor will vibrate briefly again as confirmation. The code has now been copied to the new transmitter.



Deleting the radio code (only when a transmitter has already been programmed)

Option A

1. Press the UP and DOWN buttons on the transmitter at the same time and then release them. Then press the STOP button six times.
2. Now press the UP button inside 5 seconds. The motor will confirm the code has been deleted by vibrating briefly.





i Programming the motion sensor

Note: When programming the Motion Sensor, use a Jarolift TDRC hand / wall transmitter which has already been registered on the motor.



1 Then press the UP and DOWN button at the same time 1x for a maximum of 1 second, then press the STOP button 8x. The motor will vibrate once.



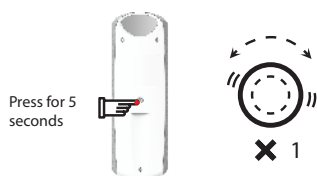
2 Now briefly (max. 1 second) press the Program button on the Motion Sensor within 10 seconds.

The control light will flash once and the motor will vibrate again.



3 Programming was successful, the Motion Sensor is now paired with the motor / receiver.

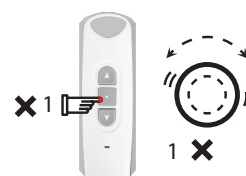
i Activating the motion sensor



1 Press the Program button on the back of the Hand / Wall transmitter for 5 seconds, the motor will vibrate once.



2 Then press the UP button for a maximum of 1 second.



3 Press the STOP button to leave this mode. The Motion Sensor has been activated successfully.

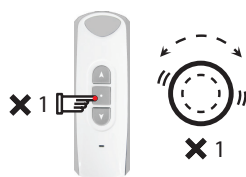
i De-activating the motion sensor



1 Press the Program button on the back of the Hand / Wall transmitter for 5 seconds, the motor will vibrate once. The motor will vibrate once.



2 Press the DOWN button once.



3 Press the STOP button to leave this mode. The motor will vibrate once. The motion sensor has been de-activated successfully.

Please note: There is a 5 minute delay between de-activation and a new activation.



Changing the direction of rotation of the motor

1. Press the UP and DOWN buttons at the same time on the transmitter already programmed, and then release them. Then press the STOP button four times.
2. Now briefly press the UP button inside 5 seconds. The motor will confirm the direction has been changed by vibrating briefly.



Setting inching mode

Activating inching mode

1. Stop the motor using the STOP button.
2. Press the UP and DOWN buttons on the transmitter at the same time and then release them. Then press the STOP button six times.
3. Now press the DOWN button within 5 seconds. The motor will confirm that inching mode has been activated by vibrating briefly.



The motor will now operate as long as you press the UP or DOWN button. While pressing the UP or DOWN button for 3 seconds in inching mode, the motor remains activated until it reaches the end point or until you press the STOP button.

Please note, timer control will not function while inching mode is set!

De-activating inching mode

1. Stop the motor using the STOP button.
2. Press the UP and DOWN buttons on the transmitter at the same time and then release them. Then press the STOP button six times.
3. Now press the DOWN button within 5 seconds. A brief vibration of the motor confirms that the inching mode is deactivated.





If you experience problems with one of our products, or you have received a defective unit, please contact the following address in writing or by email:

JAROLIFT®™

is a registered brand of
Schoenberger Germany Enterprises GmbH & Co.KG
Zechstraße 1-7
82069 Hohenschäftlarn - Germany

Tel.: 08178 / 932 932
Fax.: 08178 / 932 970 20

info@jarolift.de
www.jarolift.de

We reserve the right to make technical changes, and accept no liability for printing errors and other errors.

