

# 8 channel/16 channel

## Hand-held radio transmitter, type -08 | TDRC-16



Overview of functions ..... 2  
 Technical data and scope of delivery ..... 2  
 Operation ..... 3 – 5  
 Contact information ..... 6

The signatory declares that the hand-held radio transmitter conforms with the Guidelines and Directives according to R&TTE 1999/5/EC.

Models: TDRC - 08, TDRC - 16

DIN EN 301489-3:2013-12, DIN EN 300220-3

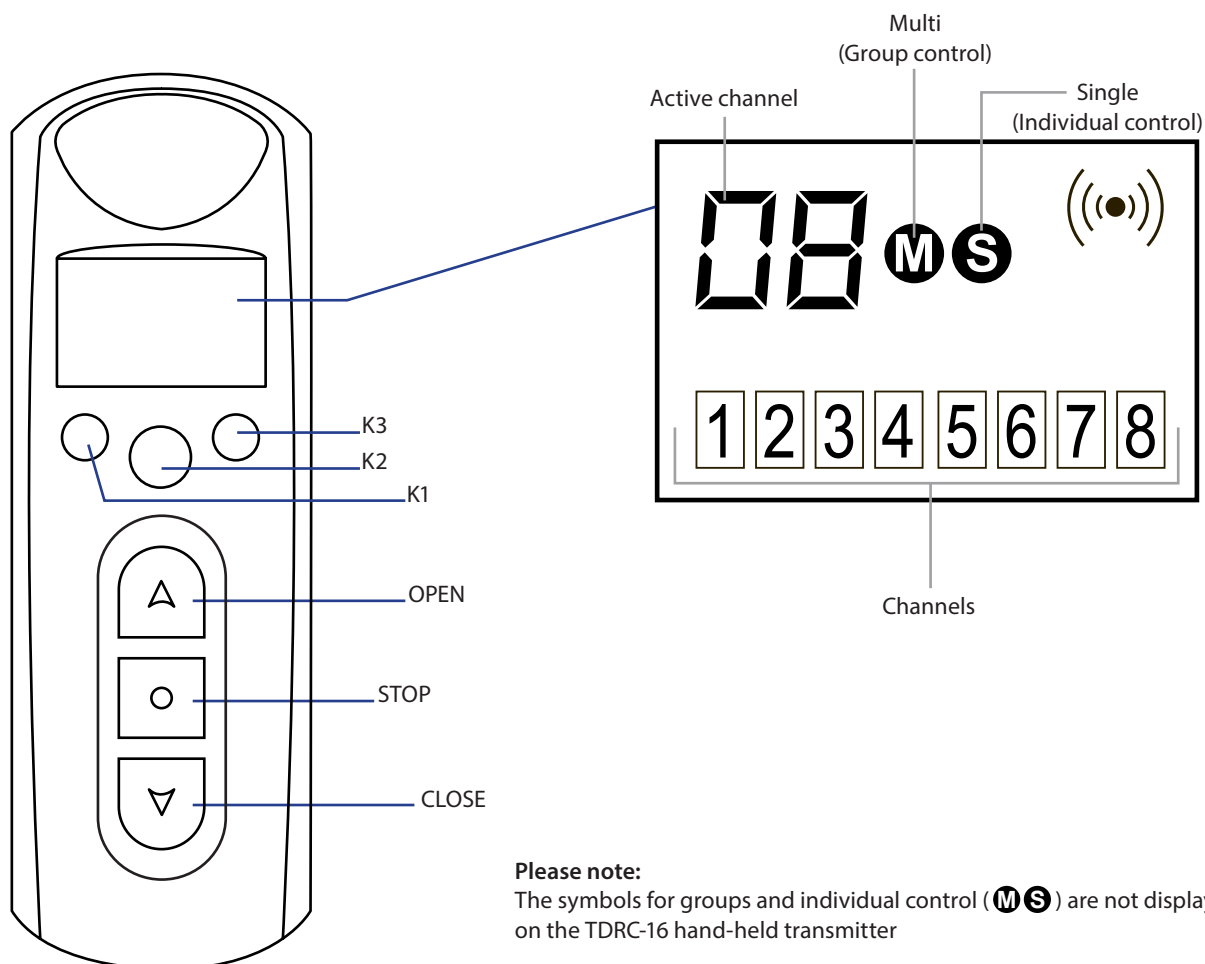
Schoenberger Germany Enterprises GmbH & Co. KG  
 Zechstraße 1-7  
 82069 Hohenschäftlarn



  
 Michael Mayer  
 Managing Director

WEEE Reg. No. DE 41060608 for: JAROLIFT®™

## Overview of functions/technical data & scope of delivery



## Technical data and scope of delivery

Technical data	
Power supply:	3 Volt
Battery model:	CR2430
Operating current:	≤12 mA
Protection:	IP 30
max. authorised permissible ambient temperature:	-10°C to +60°C
Encoding the radio:	Rolling code
Radio frequency:	433.92 MHz
Channels:	8 channel or 16 channel
Compatibility:	Compatible with all TDR wireless motors and receivers, as of production date 03/2010

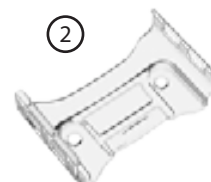
After you have unpacked the device, check the package content with the information on the delivery slip:

1. Hand-held transmitter TDRC-08 or TDRC-16
2. Wall bracket  
Operating Instructions

①



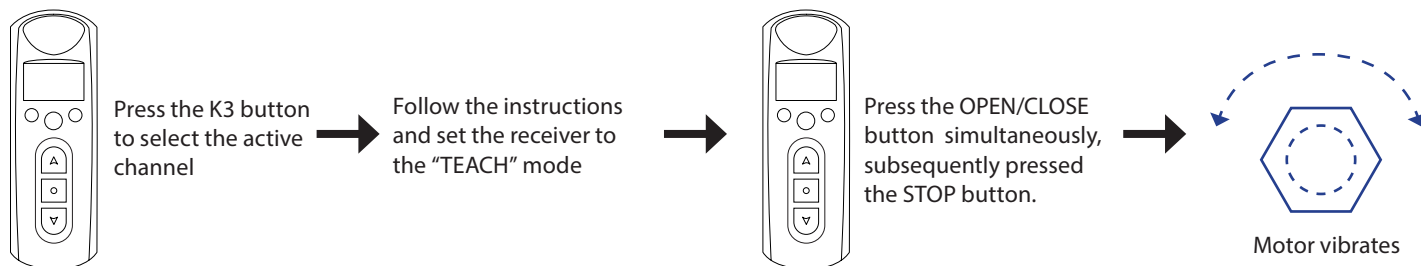
②



## Adaptation of the hand-held transmitter

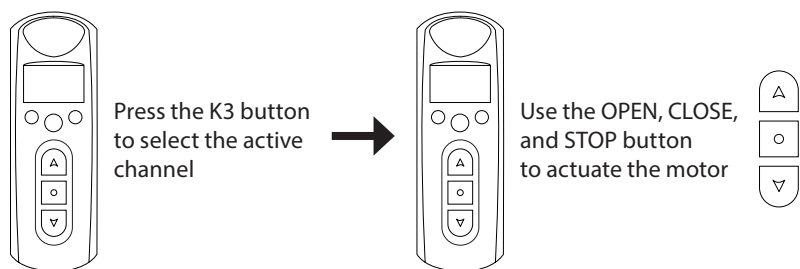
- 1 Use the K3 button (description see Page 2) on the hand-held transmitter and select the channel on which you would like to program the transmitter (the active channel is highlighted and framed in the channel bar at the bottom of the display).
- 2 Now, set the respective radio receiver or wireless motor to the "TEACH" mode and follow the applicable instructions.
- 3 Within 10 seconds, press the OPEN and CLOSE button on your hand-held transmitter simultaneously and briefly press the STOP button. If the "TEACH" process was successful, it is acknowledged by the brief vibration of the tubular motor that is attached to the radio receiver, or the vibration of the wireless motor. Now you can use the OPEN/STOP/CLOSE button to activate the motor on your transmitter.

**Each button must be depressed for approx. 1 second!**



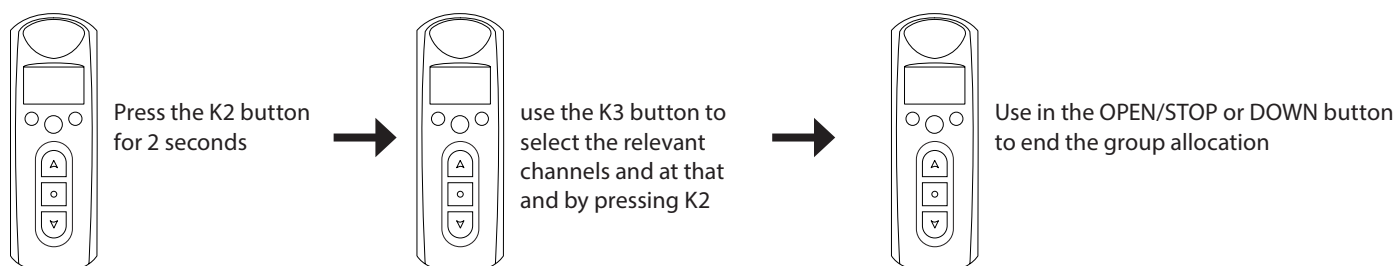
## Individual operation

Use the buttons K1 and K3 (for button description, see Page 1) to select in the relevant channel or motor. Briefly press the OPEN, STOP or CLOSE button in order to control the operating mode of the motor



## Setting the group control

- 1 First, press the K2 button on the hand-held transmitter for two seconds in order to activate the group control mode. The select channel blinks in the upper left-hand corner of the display.
- 2 Now, you can use the K1 and K3 buttons in order to select the relevant channels. By pressing the K2 button briefly, you can add the active channel (a square is used to highlight it in the display) to the group. Follow the same process if you wish to add additional channels to the group.
- 3 In order to remove a channel from the group, use the K1 and K3 button to select the channel that must be deleted, and press the K2 button briefly.
- 4 If you are satisfied with your settings, press the OPEN, STOP, or CLOSE button in order to leave the group allocation. Now, you can use the operating keys to activate the generated groups



If you have any concerns about our product or your unit is faulty, please contact us in writing or send an email to the following address:

**JAROLIFT®™**

is a registered trademark of  
Schoenberger Germany Enterprises GmbH & Co. KG  
Zechstraße 1 – 7  
82069 Hohenschäftlarn

Tel.: 08178 / 932 932 / 3,425

Fax: 08178 / 932 939 / 425

[info@jarolift.de](mailto:info@jarolift.de)

[www.jarolift.de](http://www.jarolift.de)

Subject to technical changes, misprints and errors.